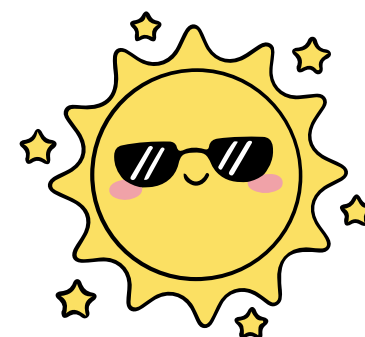




YEAR 5 Summer NEWSLETTER 2026



Welcome Back to the Summer Term

I can't quite believe that we are in our final term as year 5, this year seems to have flown by! Spring term saw: LOTS of learning, amazing role model behaviour as buddies, incredible singing and dancing at Let's Go Sing and fabulous team work across the whole term.

As we go into summer, we continue to build on our previous learning and prepare ourselves for year 6. We will also enjoy Sports' Week, (hopefully) lots of outdoor learning and the y5/6 performance!

Staff

Mrs Todd - Class Teacher
Mon, Tues, Weds, Fri

Miss Smith - Class Teacher
Thursday

Mr Johns - PPA
Tuesday am

Mrs Lock - Teaching Assistant

Mon - Fri (am)



Year 5

Homework

Mathletics will continue to be set on a **Monday** and due on a **Sunday**.

Spellings will be given at the beginning of the half term and linked to Non nonsense spelling.

HOMEWORK

READING

Children should be reading three times a week, at least. It is important that a range of genres are being read. Please sign diaries to show that reading is being completed. Between, Mrs Ritchings, Mrs Bretherton, Mrs Lock and myself, we ensure every child is read with at least once a week.

PE Days

WEDNESDAY and
THURSDAY

Maths

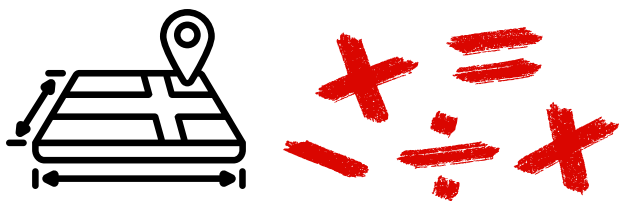
Perimeter and Area

Statistics

Position and Direction

Decimals

Converting units



Spellings

Homophones

Strategies for learning words:
words from statutory
and personal spelling lists

Proofreading

English

Classic narrative poetry

Playscripts

Myths

Reports



LEARNING

PE

Dance

Cricket

Orienteering

Rounders

Athletics



MUSIC

The Blues

Transposing Motifs

Year 5&6
production songs



Geography

European Region



Children will know...

- ways in which human processes (such as tourism and migration) operate within the Mediterranean, Greece and Athens;
- ways in which the location and physical geography of the region impact on (and are impacted by) human activity – this includes the key role of the Mediterranean Sea
- ways in which the location and distinctive features of Greece and the Athens region (including everyday life) compare and contrast with those of other places studied;
- about place-specific patterns of continuity and change (including different perspectives on issues in the news, as well as ways in which modern day Greece compares and contrasts with its past).

LEARNING

History

Ancient Greeks

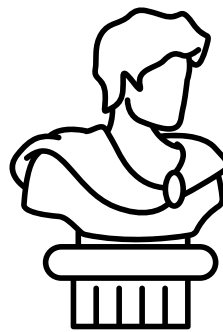


Children will know...

- Who the Ancient Greeks were
- How artefacts tell us about what life was like in Ancient Greece.
- What excavations can tell us about Ancient Greece.
- That although now Ancient Greece is one country, it used to be divided into separate city-states and the disputes that occurred between the city-states.
- What the four main types of government were in Ancient Greece: democracy, monarchy, oligarchy and tyranny.
- What life was like in rival city states, Athens and Sparta.
- How the Greeks defended themselves and why their armies and navies were so effective.

SCIENCE

Reproduction
Reversible and
Irreversible
Changes

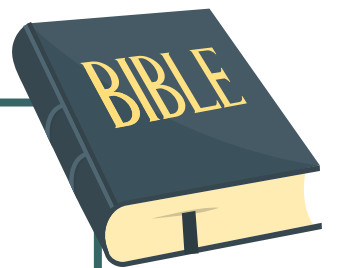


ART

3D Installations

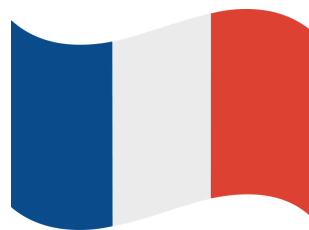
RE

Old Testament
Women
Loss, Death and
Christian Hope



Computing

Concept Maps
Word Processing



PSHE

Being my best
Growing and
changing



DT

Cooking and Nutrition:
Developing a Recipe



FRENCH

Saying what I and others
do
Activities at home
Summer festival

Expressing likes and saying
what I and others do
Things I don't like



SOCIAL MEDIA



'grimsarghstmichaels'
on Instagram

'Grim'sargh StMichael's C of E
Primary School' on Facebook.

April

13th - Welcome Back!
23rd - St George's Day (Non-uniform)
27th - Extra Curricular Clubs Start
30th - KS1/KS2 Disco

May

4th - Bank Holiday
14th/15th - Life Education
19th - Pentecost Service in Church
19th - Numeracy Day
19th - School Closes!

June

2nd - Class Photos
26th - Sports' Races (UCLAN)
Ancient Greek Day - date tbc
20th - Garden Party
27th - Field Day

July

1st - inter school athletics competition
3rd - Clubs Finish
8th - Y5/6 Performance (2pm)
9th - Y5/6 Evening Performance (6pm)
14th - End of Year Worship
17th - School Closes (1.30pm)

**GRIMSARGH
FIELD DAY**



If you wish to make contact with the staff in school please send an email to the office. Replies will be given during staff working hours.

office@grimsargh-st-michaels.lancs.sch.uk

2026