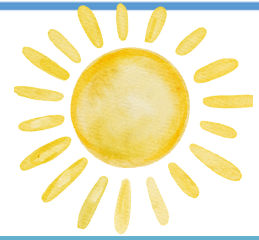




RECEPTION NEWSLETTER

SUMMER 2026



Staff

Mrs Coupe - Class Teacher
Miss Begbie - Teaching Assistant

Tuesday afternoon

Miss Begbie to cover Mrs Coupe's Leadership time.

Thursday afternoon

Miss Begbie to cover Mrs Coupe's PPA.

Welcome to the Summer term Reception newsletter! I am very excited to be joining Reception as Class Teacher for their last term in EYFS. I will mostly be running the classroom as it has been for Autumn and Spring term with a few minor changes here and there and I wanted to begin by sharing a termly newsletter alongside the weekly newsletter. The weekly newsletter will be sent on a Friday, alongside our whole school newsletter which is emailed to parents on a weekly basis. Miss Begbie will now support our learning on two afternoons a week, leading an Art and Design focus and I am sure the children will love what we have planned!

I am really looking forward to getting to know the children even more and I can't wait to support their learning and transition to Year 1.

READING

Reading is of huge importance at GSM and especially for our littlest readers in EYFS! We will continue to read 1:1 with the children on a Monday morning, changing their reading books and moving onto the next phase based on their progress. It is vital that children are read with for at least 5 minutes per day and that this is written in their reading diaries. If we cannot see that the children are reading at home, we will be reluctant to change their books, which will cause their progress to become stagnant. Children will continue to have their two books for a full week, Monday to Monday. Each Thursday, the children will choose a library book and as this book will not be matched to their phonics ability, it is to share with an adult or older sibling. Please look after all of our reading books and library books so other children can enjoy them too. We advise that you keep the children's reading and library books in their bags throughout the week.



HOME LEARNING

Mathletics

Mathletics will be set weekly, each Monday. This either links to the learning in class or a recap from previous learning. Please help support your children by making this a part of your home routine and let me know of any problems with accessing Mathletics.

MATHLETICS

PE days

**Wednesday
Thursday**

Please make sure PE kits are in school each week.

Important!

As we enter Summer term and (hopefully!) the sunshine will be coming to join us, please send your children in with sun cream already applied, a hat and a water bottle. We cannot apply sun cream so this needs to be done before the children come to school. A polite reminder that as per school policy, we only allow water in bottles.





Communication, Language and Literacy

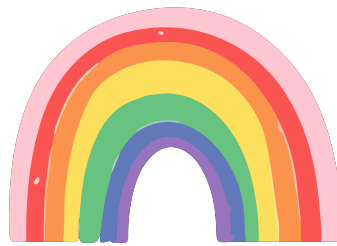
Summer 1 will see us starting our 'We Are Here' topic and we are starting a new Lancashire EYFS CLL unit based on a book called "Matisse's Magical Trail". This text is all about a snail who loves to create art - especially on pebbles! We will be exploring lots of new vocabulary, writing sentences, learning all about snails and looking at the artist Henri Matisse in Art.

In Summer 2, we will be moving into our 'Once Upon a Time' topic and we will explore lots of Traditional Tales with a key focus on the "Gingerbread Man". We will do lots of story retelling and building on our story map work from Summer 1.

Please look at our new Communication, Language and Literacy overview on our website for more details.



OUR LEARNING



Physical Development

We will be refining our fundamental skills this term whilst also preparing for our whole school Sports Day. This term will see us learn, rehearse and perform our Garden Party dance on Saturday June 20th.

Our fine motor skills will continue to be developed as we prepare for our transition to Year 1 and our pencil grips will become stronger and more secure as we work on writing sentences.



PSED

This term we will be following our PSHE themes of 'Being my Best' and 'Growing and Changing'.

We will also be welcomed to 'Feelsville' where we will explore our different emotions through mini carpet times, provision activities and stories! This will further prepare us for our transition to Year 1 when our emotions can feel big.



be the best version of yourself

Maths

Our maths learning will explore odd and even numbers, building on our doubles work from last term.

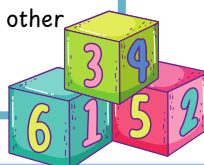
The composition of odd and even numbers and how to combine numbers together to make a total.

Comparing quantities and counting on and back.

Securing our understanding of the number 10 and recall number facts.

Verbally count beyond 20.

3-D shapes and recognising shapes have other shapes within them.



Phonics

Phase 3:

ur ow
oi ear (Including pseudo words)
air ure er (Including pseudo words)
Consolidate Phase 3

Phase 4:

CVCC & CCV

Tricky words:
come do (Phase 4)
so were (Phase 4)
some there (Phase 4)
out little what (Phase 4)

Consolidate said so have like (Phase 4)



Understanding the world (topic)

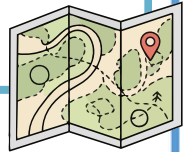


Past and Present

In Summer 2, we will investigate and enquire around our question 'How have toys changed?' by looking at toys from the past and toys that the children play with in the present. We will be curious historians and ask lots of questions - we may even ask our family members to share what their favourite toys were when they were little!

People, Culture and Communities / Natural World

Our 'We are here' focus will see us finding out more about our local area and exploring early map making skills. We will go on a local area walk and look at different environments to the one which we live in and recognise the differences and similarities. The children will compare environments and think about how we can look after our environments not just locally but across the world too. Exploration of key features of ocean habitats and animals which live underwater will enhance the children's understanding of different environments to the one we live in.



RE



Summer 1 -
Friendships

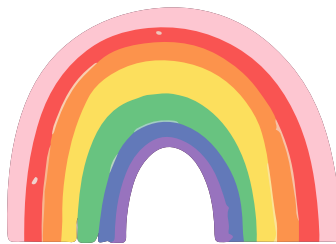
What makes a place holy or special?



Summer 2 -
Prayer

How do you celebrate special times?

OUR LEARNING



EAD

(Expressive Art and Design)

This term we will begin by looking at the work of Henri Matisse and creating artwork inspired by his style. We will be hosting our own art gallery! We will be pebble painting and using different materials to be creative with.

We will be listening to and singing lots of different songs, dancing and performing in our Garden Party.



Transition to Year 1

As the children progress through our Summer term, we will be preparing them for their transition to Year 1. Our curriculum overview naturally supports this transition and we will be encouraging even more personal independence and emotional development to prepare the children for September.

Reception will have three afternoons in Year 1 in July where they will meet their Year 1 Class Teacher and spend time in the classroom environment. I will also identify any children who may need extra support with this transition and we will work together to support their transition into KS1.



We are always looking for anyone to support our learning. If you have a keen interest or experience in any of our future areas of learning, please let me know and I can incorporate a visit or any information you may have.

Please keep your eye on social media platforms, the school website and emails from Teachers2Parents for information and photos that support and showcase the learning across school.



Instagram

Social Media



'grimsarghstmichaels' on
Instagram.

'Grimsargh St Michael's C ofE
Primary School' on Facebook.

Uniform

As a school we are constantly ensuring high standards across school life. One of the areas that we are keen to focus on is school uniform. It is really important for children to wear the correct uniform; especially school shoes **not trainers** and **no earrings**. Please ensure PE tracksuit trousers are navy blue.

Please see our website for more details: <https://www.grimsargh-st-michaels.lancs.sch.uk/policies/>



Summer Term Dates

April

Monday 13th - School OPEN

Thursday 23rd - St George's Day: Non-uniform (red/white item)

Monday 27th - Extra-curricular clubs start

May

Monday 4th - BANK HOLIDAY

Thursday 14th and Friday 15th - Life Education visits
(linked to PSHE)

June

Tuesday 2nd - Class photos

Monday 15th - Class trip to Brockholes Nature Reserve

Friday 26th - Sports Day races - whole school at UCLAN
Sports Arena (more details to follow!)

July

Friday 3rd - Extra-curricular clubs finish

Monday 13th - Reception/KS1 end of year worship 9.30am

Friday 17th - School closes at 1.30pm

Please check the school newsletter for whole school diary dates.

Teachers2Parents will be used as our main communication tool. Please see below regarding communication to teaching staff.

If you wish to make contact with the staff in school please see Mr Booth's most recent communication regarding contacting staff. I will communicate weekly via T2P on a Friday with our weekly newsletter and throughout the week if necessary. If you do have anything you would like to discuss with me, please email or call the school office and they can forward your email or pass your message onto me. I will get back to you as soon as possible but please be mindful I will be in class with your children so this may be the end of the day.

We cannot discuss matters at the beginning of the day at the Reception door as our main priority is making sure the children are welcomed, happy and safe.

Thank you for your understanding with this.