



YEAR 4 NEWSLETTER

SUMMER 2024



Staff

Mrs Todd - Class Teacher

Monday, Tuesday, Wednesday,
Friday

Mrs Slattery - Class Teacher

Thursday

Mrs Lock - Teaching Assistant

Every morning

Welcome to our final term in year 4. What a busy year we have had so far! This term is always the fullest and our 'new beginnings' since Easter day have truly begun. During the first half term, we will be visiting PGL. This is going to be a day that will see us all being challenged and pushed out of our comfort zones. We are sure that the children will leave the day with a sense of achievement and pride. We can't wait to share our experience with you. Our learning will see us visit: Ancient Egypt, the Amazon and many other places. The team are looking forward to embracing the sun and helping to create a love for learning within your children.

READING

As always, reading remains of the highest importance within our school. We are lucky to have library spaces in both our KS1 and KS2 areas and also within our classrooms. During our topic work, we always have books on offer to help with research and lead future learning. This term we will be visiting the local library. Our class are able to visit the school library on a **Tuesday**. They can also visit any lunchtime, with a pass. Please continue to promote this learning at home by reading with your child daily and writing in their reading diaries. We ask that the children change their own books and have reminded them of this since September.



No Nonsense
Spelling

HOME LEARNING

Mathletics - will continue to be set weekly. This either links to the learning set in class or a recap from previous learning. Please help support your children by making this part of your home routine and ensure children have a small whiteboard or piece of paper available to help with jottings.

Spellings - will continue to be set weekly, supporting the learning in class. I will send these out as a whole half term letter.

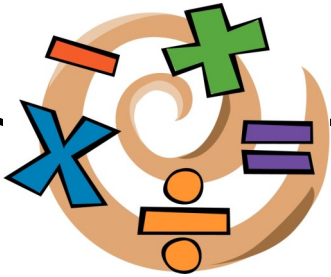


PE Days

Tuesday and Thursday

MATHS

Fractions
Decimals
Money
Time

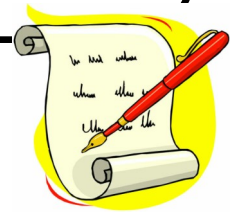


SPELLINGS

Statutory Words from the Y3-4 list
'sc' words
Endings spelt 'sion'
Apostrophes
Homophones
Suffix '-ous'
Suffix '-ly'

ENGLISH

Adverts—Persuasion
Poems with a Structure
Narrative—Folktales
Poems on a Theme
Information Booklets



LEARNING

PE

Net and Wall Games
Cricket
Netball
Athletics



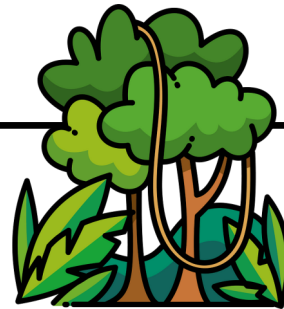
MUSIC

Clarinet



GEOGRAPHY

SOUTH AMERICA—The Amazon



Key Knowledge:

- how physical processes involving rivers, the water cycle and rainforests distinctively apply to the Amazon;
- how some human beings have adapted to life in the rainforest and the Amazon.
- use globes, atlases and maps to locate rainforests (and other biomes), including the Amazon;
- interpret a range of maps and aerial views of the Amazon and apply this information to their understanding of it
- use appropriate vocabulary when describing the Amazon; rainforest and other biomes

HISTORY— Ancient Egypt

Key Knowledge

- What the words ancient civilisation mean.
- They will know how the Egyptians used the River Nile for transportation.
- They will know how Ancient Egypt was ruled and the role of the Pharaohs.
- What life was like for different groups of people- and hierarchies in Ancient Egyptian society.
- About the role of women in Ancient Egypt.



RE

The Church
Prayer

Computing

Effective Searching
Animation
Hardware Investigators



SCIENCE

Habitats
Food Chains
The Digestive System

ART

Printing—Tutankhamun
Textiles



PSHE

Being my Best
Growing and Changing

DT

Cooking—simple savoury food

FRENCH

Describing me and others
Saying what I and others have



We are always looking for anyone to support our learning. If you have a keen interest or experience in any of our future areas of learning, please let us know and we can incorporate a visit or any information you may have.

Please keep your eye on social media platforms, school website and seesaw for information and photos that support and showcase the learning across school.



Instagram

SOCIAL MEDIA

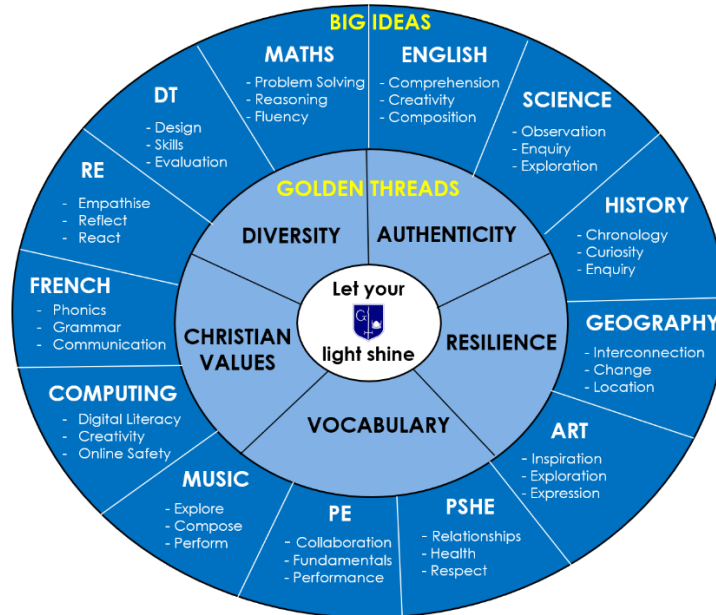


'grimsarghstmichaels'
on Instagram

'Grimsargh St Michael's C of E
Primary School' on Facebook.

Our School Curriculum

Our school website has lots of information about the intent of our school curriculum. These include our golden threads and big ideas. We felt it was important to share our school curriculum with you, once again, so you can engage in conversation with your children about the big ideas.



Multiplication Check

This term, the children will be taking part in the multiplication check. I sent the government information leaflet out, during the Autumn Term, alongside a guide and a useful website. It would be fantastic if you would support your child by asking them quick fire recall questions.

This information can also be found on the maths page on our school website.

This term we will be focusing on all times tables. Children will be required to answer a question within 6 seconds. These questions include anything up to 12 x 12.

Helpful Websites:

<https://www.topmarks.co.uk/maths-games/hit-the-button>

<https://www.timestables.co.uk/multiplication-tables-check/>

<https://play.edshed.com/en-gb/mtc>

Times Tables 1 to 12

1 times table	2 times table	3 times table	4 times table
1 x 1 = 1	2 x 1 = 2	3 x 1 = 3	4 x 1 = 4
2 x 1 = 2	2 x 2 = 4	3 x 2 = 6	4 x 2 = 8
3 x 1 = 3	3 x 2 = 6	3 x 3 = 9	4 x 3 = 12
4 x 1 = 4	4 x 2 = 8	4 x 3 = 12	4 x 4 = 16
5 x 1 = 5	5 x 2 = 10	5 x 3 = 15	5 x 4 = 20
6 x 1 = 6	6 x 2 = 12	6 x 3 = 18	6 x 4 = 24
7 x 1 = 7	7 x 2 = 14	7 x 3 = 21	7 x 4 = 28
8 x 1 = 8	8 x 2 = 16	8 x 3 = 24	8 x 4 = 32
9 x 1 = 9	9 x 2 = 18	9 x 3 = 27	9 x 4 = 36
10 x 1 = 10	10 x 2 = 20	10 x 3 = 30	10 x 4 = 40
11 x 1 = 11	11 x 2 = 22	11 x 3 = 33	11 x 4 = 44
12 x 1 = 12	12 x 2 = 24	12 x 3 = 36	12 x 4 = 48

Multiplication tables check

Do you have a child in year 4 at primary school?

If so, your child will be participating in the multiplication tables check (MTC) in June.

The purpose of the check is to determine whether your child can fluently recall their times tables up to 12, which is essential for future success in mathematics. It will also help your child's school to identify if your child may need additional support.

What is the multiplication tables check?

It is an on-screen check consisting of 25 times table questions. Your child will be able to answer 3 practice questions before taking the actual check. They will then have 6 seconds to answer each question. On average, the check should take no longer than 5 minutes to complete.

What if my child cannot access the check?

There are several access arrangements available for the check, which can be used to support pupils with specific needs. Your child's teacher will ensure that the access arrangements are appropriate for your child before they take the check in June.

The check was designed to be inclusive and accessible to as many children as possible, including those with special educational needs or disability (SEND) or English as an additional language (EAL). However, there may be some circumstances in which it will not be appropriate for a pupil to take the check, even when using suitable access arrangements.

If you have any concerns about your child accessing the check, you should discuss this with your child's headteacher.

Do I need to do anything to prepare my child for the check?

No, you do not need to do anything additional to prepare your child for the check. As part of usual practice, teachers may ask you to practise times tables with your child.

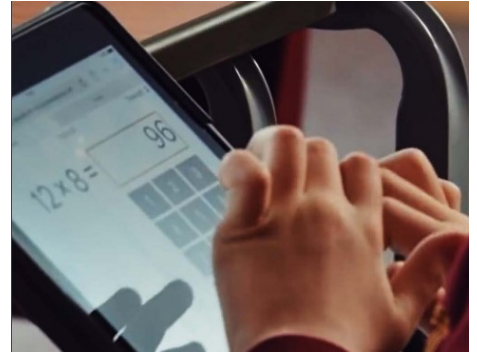
Schools will have unlimited access to a 'try it out' area from April. They can use this to make sure pupils have the necessary support to access the check. This includes opportunities for pupils to familiarise themselves with the check application and try out any access arrangements that may be required.

How will the results be used?

Schools will have access to all their pupils' results, to allow them to identify pupils who need additional support.

Will I receive feedback on my child's check?

Yes. Your child's teacher will share your child's score with you, as they would with all national curriculum assessments. There is no pass mark for the check.



Uniform

As a school we are constantly ensuring high standards across school life. One of the areas that we are keen to focus on is school uniform. It is really important for children to wear the correct uniform; especially school shoes not trainers and no earrings. Please ensure PE tracksuit trousers are navy blue.

Please see our website for more details: <https://www.grimsargh-st-michaels.lancs.sch.uk/policies/>



DIARY DATES

APRIL

18th—PE Sessions begin with Danny from Fylde Cricket

23rd—Non-Uniform for St George's Day (red/white)

29th - Extra-Curricular Clubs Start

MAY

7th—Trip to PGL Winmarleigh

16th/17th—Life Education Visit

21st—Finish for Half Term

JUNE

3rd—Multiplication Check Window Opens (2 weeks)

4th—Class Photos

Week of 17th—Sports Week

19th—Sports Day (KS2 pm)

Please also take note of the diary dates on the school newsletter as we are always adding events!



If you wish to make contact with the staff in school please send an email to the office. Replies will be given during staff working hours.

office@grimsargh-st-michaels.lancs.sch.uk