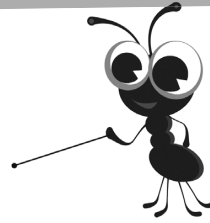


Name: \_\_\_\_\_ Date: \_\_\_\_\_

# Hour glass designs

Recognise where a shape will be after reflection in two lines of symmetry



You will need:

- ruler
- coloured pencils

The North American Native people of the Sioux and Cheyenne tribes drew the "hour glass" design on their tepees, moccasins and pouches.

Reflect the pattern in the vertical line of symmetry, then reflect the pattern and its image in the horizontal line of symmetry. Colour your design.

