



$$\square = 15 + 10$$

$$43 - 37 = \square$$

$$64 - 40 = \square$$

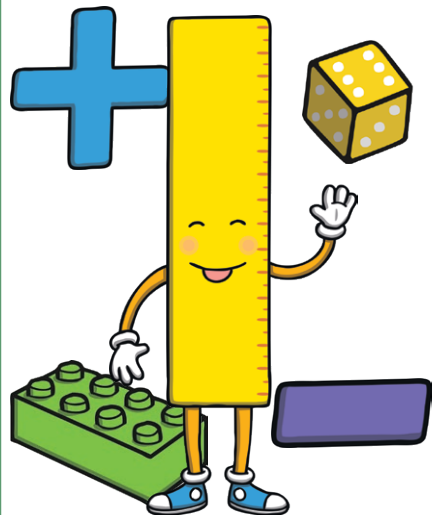
$$3 \times \square = 6$$

$$24 \div 2 = \square$$

$$\frac{1}{3} \text{ of } 18 = \square$$

$$\frac{2}{4} \text{ of } 20 = \square$$

Arithmetic Practice



$$\square = 15 + 10$$

$$43 - 37 = \square$$

$$64 - 40 = \square$$

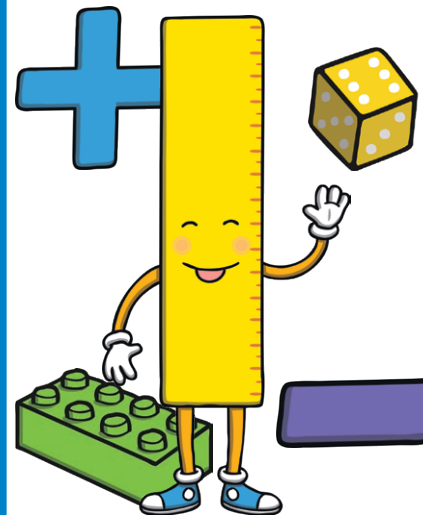
$$3 \times \square = 6$$

$$24 \div 2 = \square$$

$$\frac{1}{3} \text{ of } 18 = \square$$

$$\frac{2}{4} \text{ of } 20 = \square$$

Arithmetic Practice



Year 2 Arithmetic Practice Bookmarks Pack 9 **Answers**

$$25 = 15 + 10$$

$$43 - 37 = 6$$

$$64 - 40 = 24$$

$$3 \times 2 = 6$$

$$24 \div 2 = 12$$

$$\frac{1}{3} \text{ of } 18 = 6$$

$$\frac{2}{4} \text{ of } 20 = 10$$