



$$\square = 7 - 2$$

$$69 + 10 = \square$$

$$25 + 4 + 4 = \square$$

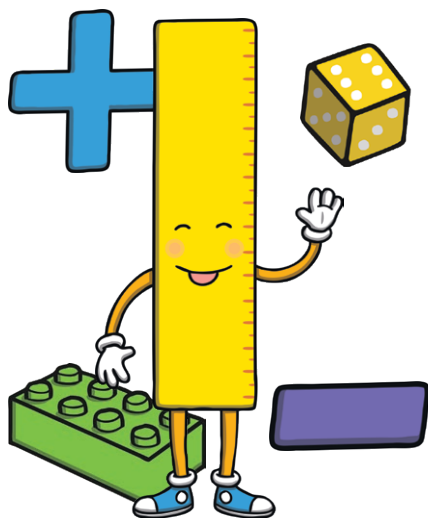
$$5 \times \square = 35$$

$$70 \div 10 = \square$$

$$\frac{1}{2} \text{ of } 40 = \square$$

$$\frac{1}{4} \text{ of } 24 = \square$$

Arithmetic Practice



$$70 \div 10 = \square$$

$$\frac{1}{2} \text{ of } 40 = \square$$

$$\frac{1}{4} \text{ of } 24 = \square$$



$$\square = 7 - 2$$

$$69 + 10 = \square$$

$$25 + 4 + 4 = \square$$

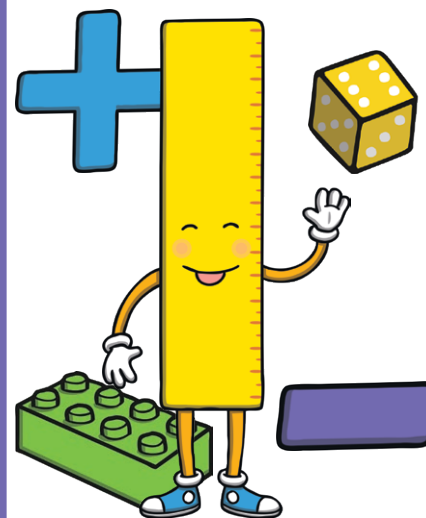
$$5 \times \square = 35$$

$$70 \div 10 = \square$$

$$\frac{1}{2} \text{ of } 40 = \square$$

$$\frac{1}{4} \text{ of } 24 = \square$$

Arithmetic Practice



$$70 \div 10 = \square$$

$$\frac{1}{2} \text{ of } 40 = \square$$

$$\frac{1}{4} \text{ of } 24 = \square$$

Year 2 Arithmetic Practice Bookmarks Pack 7 **Answers**

$$5 = 7 - 2$$

$$69 + 10 = \mathbf{79}$$

$$25 + 4 + 4 = \mathbf{33}$$

$$5 \times \mathbf{7} = 35$$

$$70 \div 10 = \mathbf{7}$$

$$\frac{1}{2} \text{ of } 40 = \mathbf{20}$$

$$\frac{1}{4} \text{ of } 24 = \mathbf{6}$$