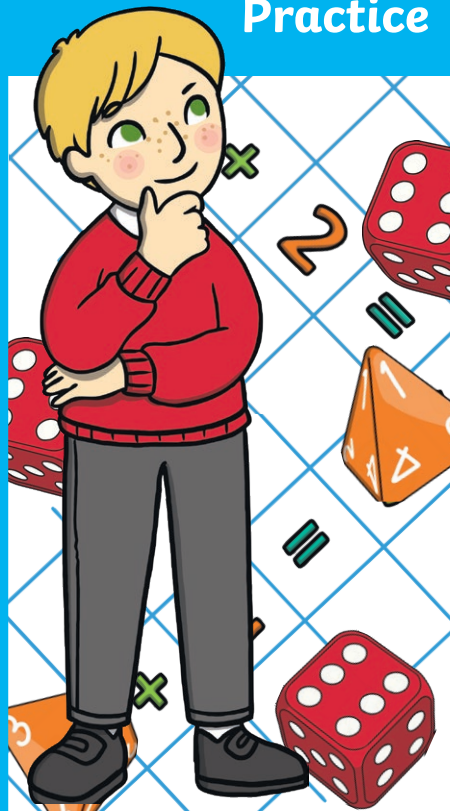




Arithmetic Practice



$7 + 1 = \square$

$99 + 10 = \square$

$20 + 40 + 40 = \square$

$\square = 81 - 38$

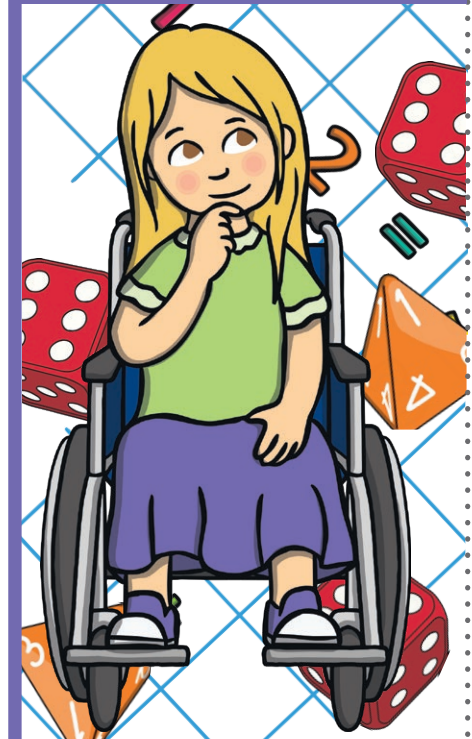
$6 \times 5 = \square$

$90 \div 10 = \square$

$\frac{1}{3}$ of 15 = \square



Arithmetic Practice



$7 + 1 = \square$

$99 + 10 = \square$

$20 + 40 + 40 = \square$

$\square = 81 - 38$

$6 \times 5 = \square$

$90 \div 10 = \square$

$\frac{1}{3}$ of 15 = \square

Year 2 Arithmetic Practice Bookmarks Pack 2 **Answers**

$$8 + 6 = \mathbf{14}$$

$$52 - 7 = \mathbf{45}$$

$$5 + 6 + 7 = \mathbf{18}$$

$$\mathbf{90} = 9 \times 10$$

$$74 - 10 - 10 = \mathbf{54}$$

$$\underline{1} \text{ of } 16 = \mathbf{4}$$

4

$$55 \div 5 = \mathbf{11}$$